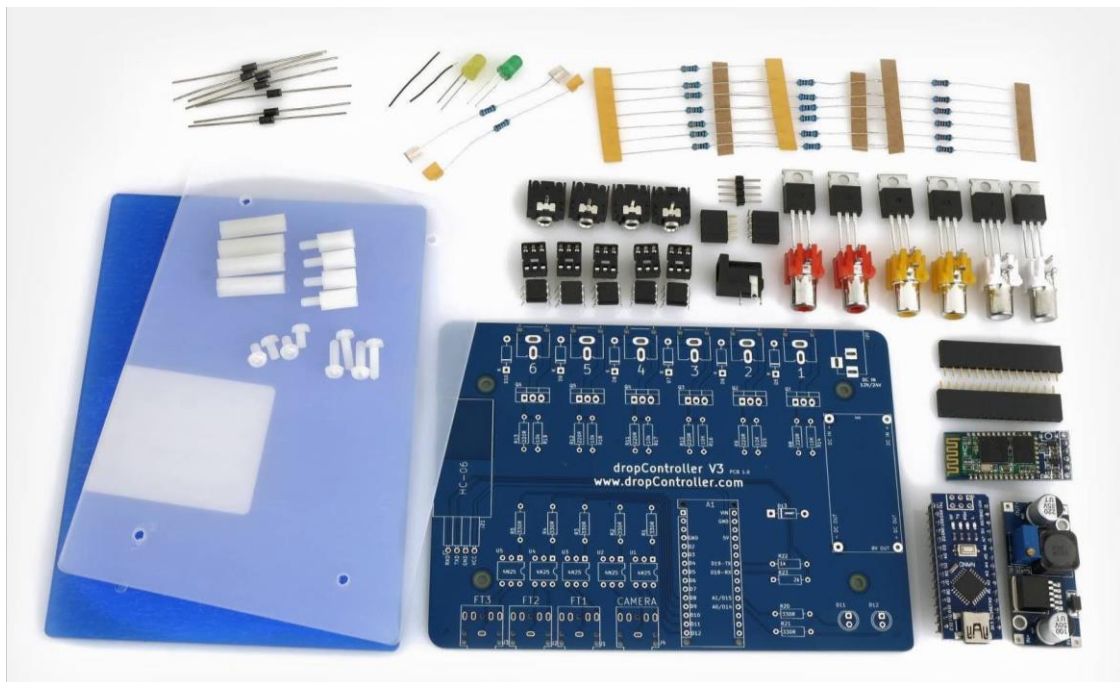
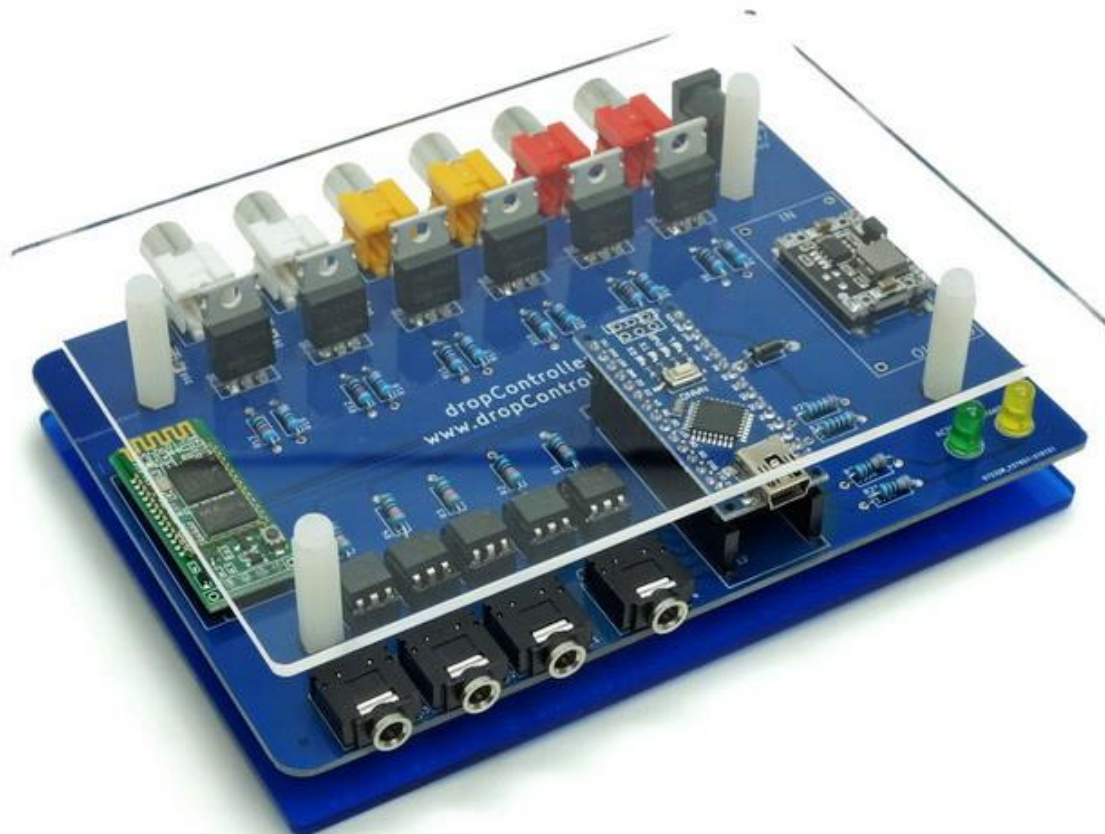


# dropControllerV3 Kit: Contents



The dropControllerV3 kit contains all the parts required to build a full controller.

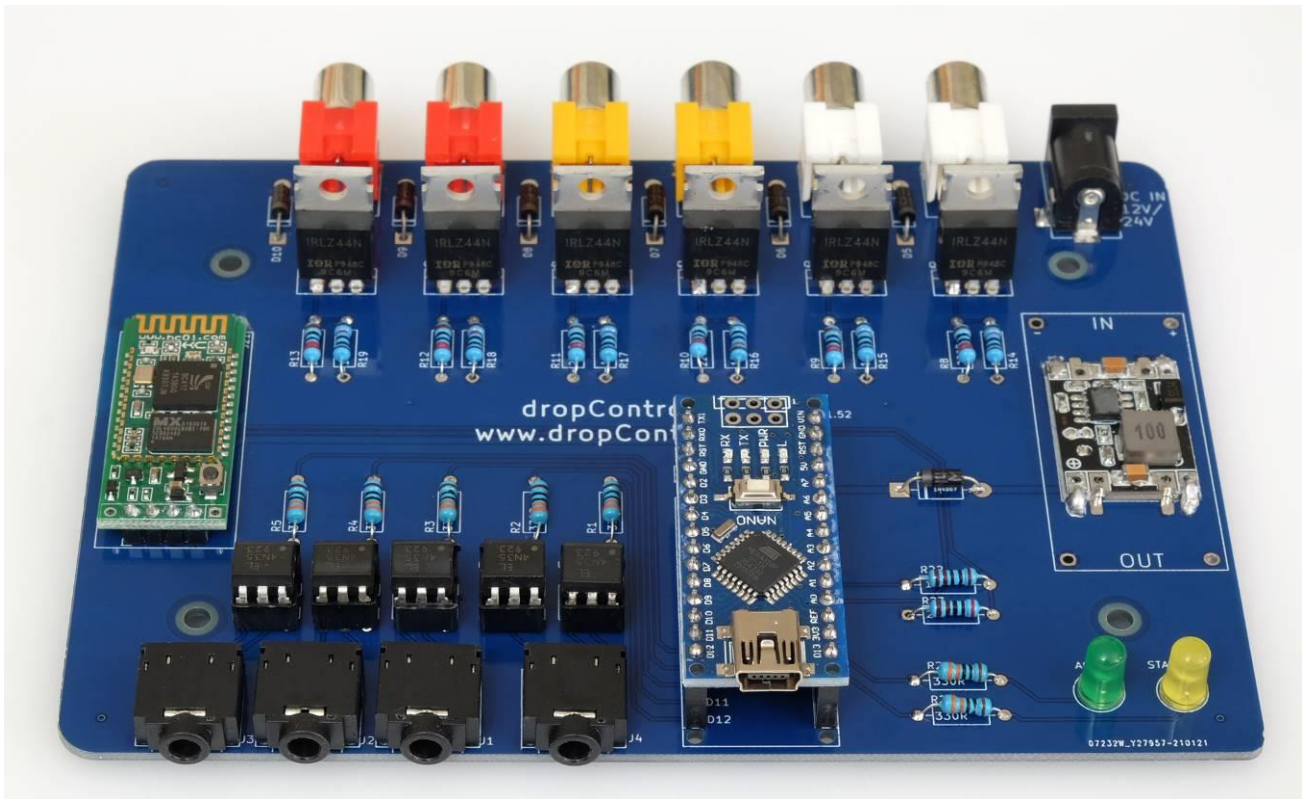


## dropControllerV3 Kit: Contents

DESCRIPTION	QTY	CHECK
PCB	1	
ACRYLIC BASE	1	
ACRYLIC TOP	1	
M3 STAND 20MM	4	
M3 STAND 10+6MM	4	
M3 SCREW	8	
ARDUINO NANO	1	
HC-06	1	
DC-DC BUCK CONVERTER (+ 1x4 MALE SIL)	1	
1x15 SIL FEMALE 2.54	2	
1x 4 SIL FEMALE 2.54	1	
BARREL JACK - DC-05 A: 5.5 mm OD, 2.1 mm ID	1	
RCA / PHONO SOCKET - RCA-RCJ-04x	6	
3.5MM STEREO SOCKET - PJ-307	4	
6 PIN DIL SOCKET	5	
4N25 or 4N35	5	
MOSFET IRL540N or IRLZ44N	6	
LED 5mm - YELLOW	1	
LED 5mm - GREEN	1	
1N4007	7	
1/4W RESISTOR 10K	6	
1/4W RESISTOR 2K	1	
1/4W RESISTOR 1K	1	
1/4W RESISTOR 330 OHM	7	
1/4W RESISTOR 220 OHM	6	

Some parts may change without notice depending on availability.  
Kits now include a fixed 9V output DC-DC buck converter.

# Completed PCB



PCB v1.52 with the 9v DC-DC buck converter.